

## TRINITY METHODIST CHURCH

Welcome to our Services to-day.

If you are visiting us we are pleased to see you and hope that you will join us for tea or coffee and fellowship after this morning's service.



### Notices for April 2025.

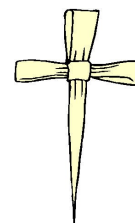
#### SUNDAY SERVICES LIVESTREAMED.

#### Sunday 6th April Lent 5.

10.30am Worship led by Clive Pickett.

#### Sunday 13th April Palm Sunday

10.30am United Service at Broomfield led by Val Carter.



#### Maundy Thursday 17th April

7pm Tenebrae Service at Trinity led by Rev Asif.

#### Good Friday 18th April

11am Chelmsford High Street, Walk of Witness. CTiC.

Full details: <https://ctic.org.uk/>

3pm Meditation Service at Moulsham led by Sue Johnson.

#### Easter Sunday 20th April

10.30am Worship led by Rev Asif.

(Bring flowers to decorate the cross.)



#### Sunday 27th April

10.30am United service at Trinity led by Rev Asif.  
Prayers for SWF and Christian Aid.

12.30pm Friendship Lunch/ 2pm HC **TBC.**

*Food, Feet, Feelings*

**Maundy Thursday**

Trinity Methodist Church  
 Thursday 17th April at  
 7pm  
 Service led by  
 Rev. Asif Karam

Chelmsford Methodist Circuit  
 United Service  
 All are welcome

**Pray calendar for April:**

**6 April:** Circuit/CTiC: Witham, St. Mary's, Gt. Baddow & Assure.  
 The World Church: Southern Africa and Britain.  
 District Chairs: BEH & Ecumenical Working.

**13 April:** Circuit/CTiC: Moulsham Lodge, St. Michael's & All Angels,  
 Galleywood.  
 The World Church: the Caribbean, the Americas & Britain.  
 District Chairs: BEH & the Darlington District.

**20 April:** Circuit/CTiC: Broomfield, St. Paul's Church, Gt. Baddow & God's  
 Heritage Assembly, Writtle.  
 The World Church: Asia & Britain.  
 District Chairs: BEH & the Newcastle upon Tyne District.

**27 April:** Circuit/CTiC: SWF & Christian Aid.  
 The World Church: Europe & Britain.  
 District Chairs: BEH & the Yorkshire West District.

# CHELMSFORD METHODIST CHURCHES EASTER SERVICES 2025



## **Palm Sunday 13th April**

10.30am United service at Broomfield Methodist Church,

Led by Rev Asif Karam

## **Maundy Thursday 17th April**

7pm Tenebrae Service at Trinity Methodist Church, Led by

Rev Asif Karam

## **Good Friday 18th April**

11am Chelmsford High Street, Walk of Witness.

Full details: <https://ctic.org.uk/>

3pm Meditation Service, Moulsham Lodge Methodist

Church led by Sue Johnson

## **Sunday 20th April Easter Services**

10.30 am Trinity Methodist Church, led by Rev Asif Karam

(Bring flowers to decorate the cross)

10.30 Service Moulsham Lodge Methodist Church, led by Jim Lowe

10.30am Service Broomfield Methodist Church, led by Mike Fogg

### **Methodist Churches**

Broomfield CM1 7AG

Trinity CM1 2XB

Moulsham Lodge CM2 9NJ

*Join us*

*Everyone is*

*Welcome*

The **Methodist Church** 

**Events: Monday 7 April - Saturday 3 May 2025.**

**CANCELLED Lent Prayer Sessions on zoom with Rev Asif.**

**Wednesdays at Trinity until 16 April: Study of John.**

**Thursday 17 April 10.30am Admirals House group. Speaker: Hilary Jackson  
TWAM ( Tools with a Mission) at Mary's.**

**Thursday 17 April Writtle House group join Maundy Thursday service at  
Trinity at 7pm.**

**Thursday 24 April 2pm Springfield House group: 'Identify religious sites.'**

**If you are interested in joining a House Group, or starting one of your own,  
please feel free to speak to Rev Asif or Jeff Green  
and they will offer support and guidance.**

**\*\*\*\*\***

**Future dates:**

**Thursday 8 May 7.15 for 7.30pm. Men's Supper Club. 'Recycling  
Sustainability in Chelmsford' : Mark Smith (CCC)**

**Wed 14 - Sat 17 May TMD 'Carousel', Chelmsford Theatre.**

**Sunday 18 May 4pm Easter Offering Service. Witham Methodist Church.**

**Tuesday 20 May 2pm. Circuit Ladies Afternoon Tea.**

**Speaker: Howard Brooks 'Queen Boudicca and the Fenwick Excavations in  
Colchester High Street.**

A message from Hilary and Gill Parker who helps run Chelmsford Fairytale campaign.



### **Fairtrade Easter**

Easter Sunday falls late this year and is traditionally a time for eating lots of chocolate. Unfortunately, it isn't always easy to find Fairtrade Easter chocolate as the Easter market is highly competitive and chocolate prices have been rising steadily owing to a poor cocoa harvest in West Africa.

The Meaningful Chocolate Company has, as usual, produced the Real Easter Egg which is not only fully Fairtrade but includes a leaflet telling the Easter story aimed at children. Sadly, it is only available on-line either from the Meaningful Chocolate Company or from sites such as [Re-vived.com](http://Re-vived.com) and [Eden.co.uk](http://Eden.co.uk).

Tony's Choclonely has a range of Easter eggs and is also fully Fairtrade although the Fairtrade Mark is rather small on the packaging. You can find these in supermarkets and in both the Chelmsford Oxfam shops. There are also some Fairtrade Easter chocolates in John Lewis. All these products are at the top of the price range.

If you are on a limited budget, then the best way to help the cocoa farmers is to buy your Easter eggs and bunnies in Aldi although you have to look carefully as the Fairtrade products are on the same shelves as the Rainforest Alliance ones. Rainforest Alliance of course does not offer farmers the same benefits as Fairtrade.

Gill Parker.





## Shopping List Spring 2025



Emergency food for people in crisis

Thank you for continuing to support us  
These items are most needed at present:

Tinned meat meals  
Tinned fish  
Tinned vegetables and tomatoes  
Rice  
Instant mashed potato sachets  
Tinned pulses  
Pasta sauce  
Ketchup and mayo  
UHT milk  
Long-life fruit juice and fruit squash  
Tea bags–40s/80s and small jars instant coffee  
Cereal  
Tinned fruit  
Sponge puddings and tinned rice pudding  
Instant custard sachets  
Jam and spreads  
Chocolate bars eg Kitkat /cereal bars/crisps/savoury crackers  
All toiletries: shower gel, shampoo,  
deodorant, handwash, toothpaste,  
toilet rolls, washing up liquid, laundry tabs/pods  
Nappies sizes 4 to 7  
We have sufficient pasta and baked beans, thank you

Items can be delivered to our warehouse at  
450A Beehive Lane CM2 8RN

[www.chelmsford.foodbank.org.uk](http://www.chelmsford.foodbank.org.uk)

See also weekly Top 5 most needed items updates on Facebook



[info@chelmsford.foodbank.org.uk](mailto:info@chelmsford.foodbank.org.uk) 07512 574 542

Chelmsford Foodbank is overseen by The River Church Chelmsford Ltd, a company limited by guarantee.  
Registered in England number: 7685257. Registered charity number: 1144804.

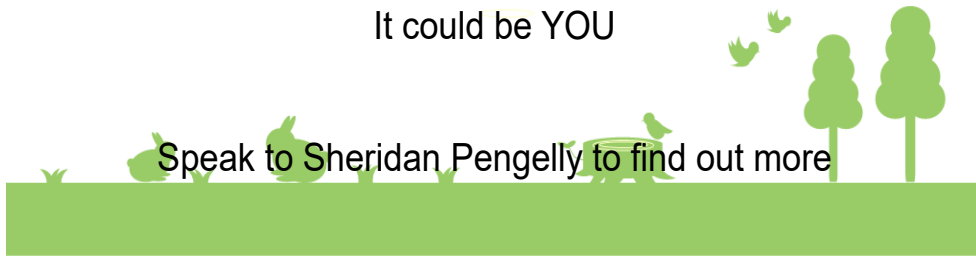
# Can you help?

## Could you be the next ECO Champion for Trinity?

We are on an amazing journey working towards a Silver ECO Church award.

If you care about God's creation,  
If you believe it is part of our calling to care for it  
It could be YOU

Speak to Sheridan Pengelly to find out more



### APRIL ECO TIP

#### PROBLEM

Single-use plastic takes more than 500 years to decompose. In the meantime, straws, plastic bags, and six-pack rings continue to pollute the environment and hurt marine life.

#### SOLUTION

Use alternatives to disposable plastic — items made of wood, glass, ceramic, or stainless steel.



# Women's Breakfast

With

# Claire Musters

Saturday 10th May 2025

8.30am

Christ Church, London Road, Braintree

Tickets £12.50 (to be bought in advance)  
includes continental style breakfast

**Claire Musters** is a writer, speaker, church leader, editor and host of the *Woman Alive* book club. Her books include: *Taking Off the Mask*, *Everyday Insights: Disappointment and loss* and *Grace-filled Marriage*. She has also co-authored many of the Waverley Abbey Insight Guides, including *Burnout*, *Self-acceptance*, *Managing Conflict* and *Shame*.

She writes and edits regularly for *Premier Woman Alive* and *Premier Christianity*, and also writes Bible study notes for *Day by Day with God*. In all she does, Claire hopes to equip Christians for everyday life, both the highs and lows, using personal anecdotes while unpacking biblical truth. She believes having the courage to be authentic with one another breaks down barriers and helps us to step into all God has for us.



For tickets and more information contact Christ Church Office:

Tel: 01376 326628; Email: [tickets@christchurchbraintree.org.uk](mailto:tickets@christchurchbraintree.org.uk)

[www.christchurchbraintree.org.uk](http://www.christchurchbraintree.org.uk)

Please note: There is no parking at the church, but the nearby George Yard car park is open from 7am.



# EASTER OFFERING

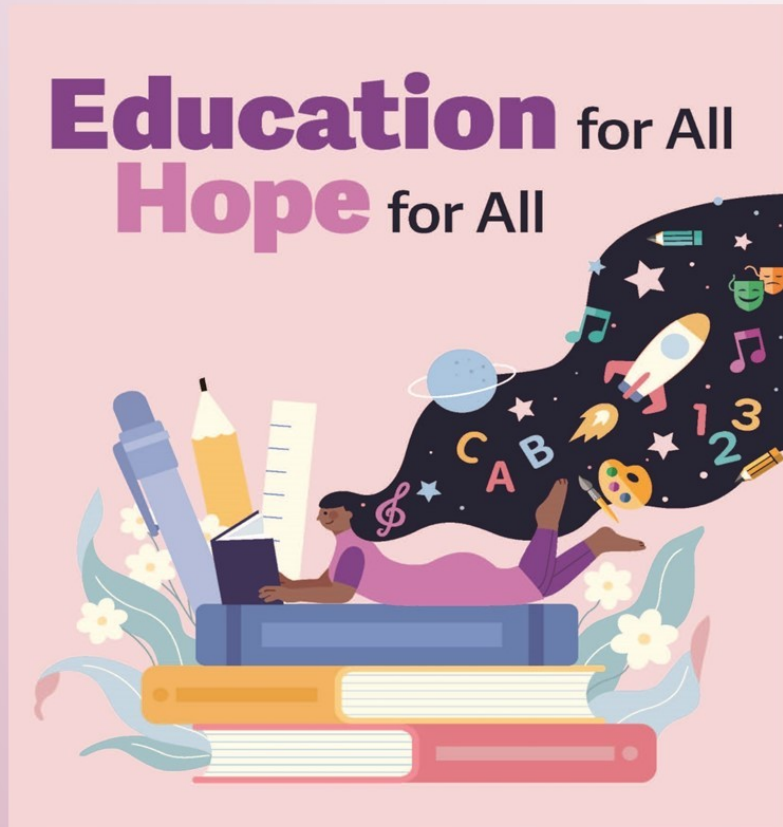
SUNDAY 18TH MAY 2025

4pm Witham Methodist Church

Please  
come along  
and  
support  
this event.

Everyone is  
welcome.

Plenty of  
parking in  
nearby  
public car



The Easter Offering 2025 service focuses on every person's right to education. Stories tell of people who are committed to changing lives through education.



**Education for All, Hope for All** offers churches, circuits and districts a moment to consider how education transforms lives and communities, opening God's promise of hope and fullness of life for all people.

It includes the dedication of the Easter Offering donated to the World Mission Fund, which works with over a hundred of the Methodist Church in Britain's Partner Churches and organisations around the world.

**Witham Methodist Church. Guithavon Street CM8**

FOR YOUR DIARY: A SEPTEMBER DATE.



# CHELMSFORD CIRCUIT WELCOME SERVICE

**Rev. Asif Karam**

Chelmsford Circuit Superintendent

and **Rev. Dr Jennifer Walters**

Service led by:

**Rev. Dr David Chapman**

District Chair,

Bedfordshire, Essex and Hertfordshire District

**Witham Methodist Church**

Guithavon Street, Witham CM8 1BJ

**Wednesday 3rd September 2025**

7pm followed by refreshments

**EVERYONE IS WELCOME**

Large public car park on Guithavon Street.

[karen.murrell@chelmsfordcircuit.org.uk](mailto:karen.murrell@chelmsfordcircuit.org.uk)

The **Methodist** Church



## **Our Mission Statement**

**Our mission is to proclaim the love of God  
in Jesus to all people by:**

**Being a place of welcome, worship & nurture.**

**Belonging, learning & growing together.**

**Serving the community in whatever way we can.**

**BIRTHDAYS & ANNIVERSARIES.** Very warm wishes to anyone celebrating this week.

**WELCOME CARDS** are available in the vestibule if you would like to share your contact details with Trinity. Please leave with the stewards on duty.

**AN INTERCESSIONS BOOK** is available in the vestibule for you to enter the name of anyone you would like to be remembered during the intercessory prayers.

**LOOP SYSTEM** An Induction Loop System for the hearing impaired is fitted in the church.

**SERVICES LIVESTREAMED** on Facebook and You Tube.

**CHURCH MEMBERSHIP.** If you have been worshipping with us for a while and would like to explore becoming a member of Trinity, please contact Rev Asif via the office 01245 269079.

**GIVING & GIFTS:** contact Nigel Murrell, Treasurer.

**CIRCUIT NEWS** and **TRINITY NEWS** available online and in the vestibule.

**CHELMSFORD METHODIST CIRCUIT:** <http://www.chelmsfordcircuit.co.uk>

**CTiC** (Christians Together in Chelmsford) see their website for information on events and activities <https://ctic.org.uk>

**TRINITY NEWS**

February/March/April 2025 edition available on the website or in the vestibule.

Closing date May/June/July 2025 edition Wednesday 23 April (publication 4 May.)

**CHELMSFORD CIRCUIT NEWSLETTER**

MARCH/APRIL 2025 available on the Circuit website or in the vestibule. Deadline for May/June 2025 by mid April.

<http://www.chelmsfordcircuit.co.uk>

**JOIN OUR FACEBOOK PRAYER SESSIONS:**

6pm Fridays with Sue Johnson on Sue's Facebook



**NOTICES for MAY 2025 BY TUESDAY 29 APRIL 2025.**

Church Office email: [trinitymethodistchelmsford@btconnect.com](mailto:trinitymethodistchelmsford@btconnect.com)

Telephone: 01245-269079

Church office: Monday and Wednesday 10-12noon.

Trinity Methodist Church, Rainsford Road, Chelmsford, CM1 2XB

Office: 01245-269079

E-mail: [trinitymethodistchelmsford@btconnect.com](mailto:trinitymethodistchelmsford@btconnect.com)

Website: [trinitymethodistchelmsford.org](http://trinitymethodistchelmsford.org)

Charity No. 1144617